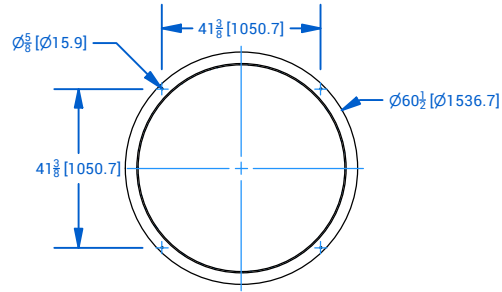


# **GENERAL NOTES:**

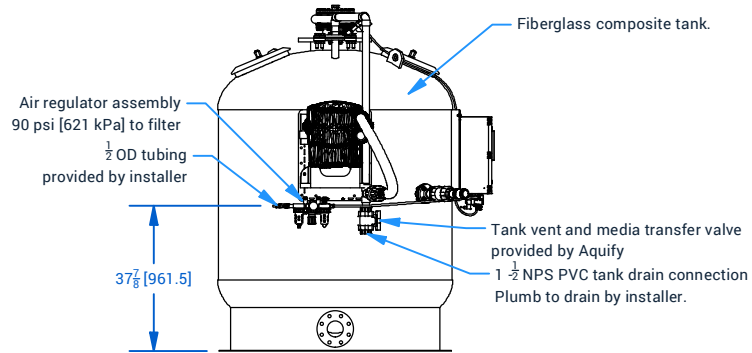
1. All flanged connections are flat faced PS-15-69 with ASME B16.5 Class 125/150 bolting pattern.
2. All pneumatic tubing supplied by pool contractor unless specified otherwise.
3. Contractor to provide and install 4 NPS [DN100] butterfly valve to tank drain connection.
4. Supply 120 VAC single-phase power (direct wire) to filter controller with 15 AMP circuit protection.
5. Provide 125 PSI [862 kPa] regulated air supply to filter.
6. Housekeeping pad may be required to meet site-specific drain plumbing requirements.
7. All PVC fittings are Schedule 80 ASTM D2467. All PVC pipe is Schedule 80 ASTM D1785 unless specified otherwise.
8. All hardware per ANSI B1.1.
9. Dimensions listed are in inches [mm].
10. Missing dimensions can be obtained from CAD data.

# **FILTER DATA:**

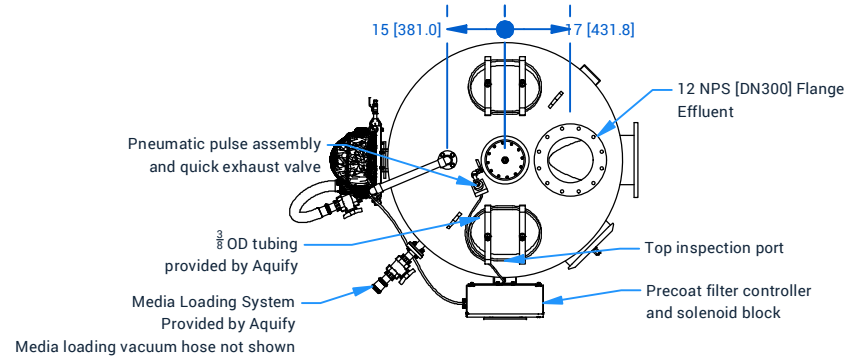
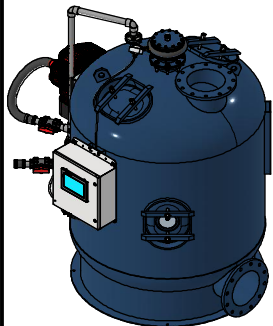
NSF/ANSI-50 Listed filter  
 Design Pressure: 50 PSI [345 kPa]  
 Filtration Rate: 0.5 - 1.5 GPM/SF  
 Tank Volume: 787 gal [2.98 M³]



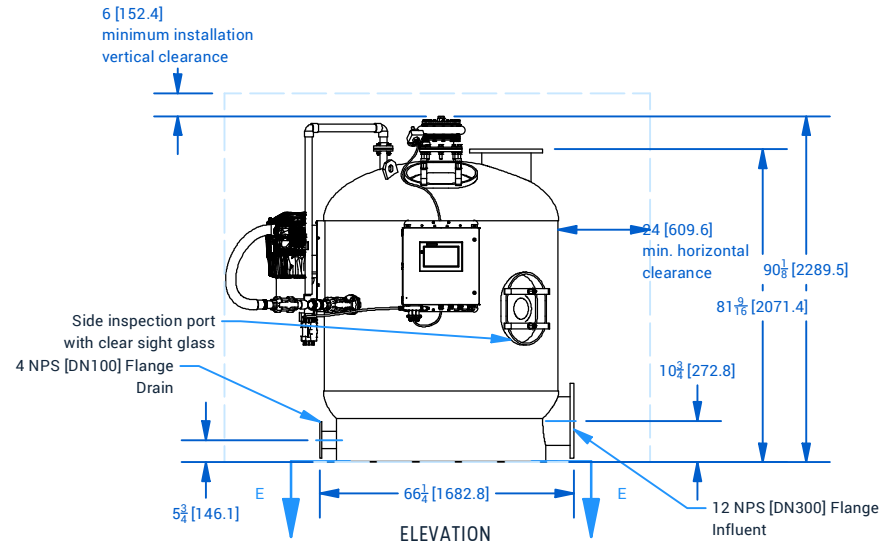
SECTION E-E  
TANK MOUNTING DETAIL



VIEW D-D  
MEDIA LOADING SYSTEM ELEVATION



PLAN



ELEVATION

Specification	PMF-60-1400-FRP	PMF-60-1600-FRP
Filtration Area	1400 FT² [130.1 M²]	1600 FT² [148.6 M²]
Filter Rate	700 GPM - 2100 GPM [159 M³/hr - 477 M³/hr]	800 GPM - 2400 GPM [181.7 M³/hr - 545.1 M³/hr]
Perlite Media Required	112 LB [50.8 Kg]	128 LB [58.1 Kg]
Unit Weight (Dry)	1715 LB [777.9 Kg]	1875 LB [850.5 Kg]
Operating Weight	8284 LB [3757.6 Kg]	8444 LB [3830.1 Kg]
Concrete Bearing Pressure	14.2 PSI [97.9 kPa]	14.5 PSI [100 kPa]



<b>TITLE</b> Product Specification Sheet Aquify Precoat Media Filter Specification Sheet, PMF-60-1400-FRP, PMF-60-1600-FRP		
PROJECT	LOCATION/POOL	REV <b>B</b>
SCALE 1 / 50	SHEET 1 OF 1	