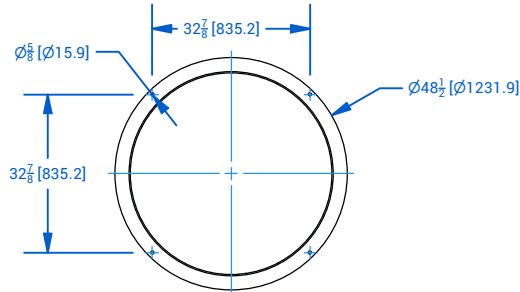


GENERAL NOTES:

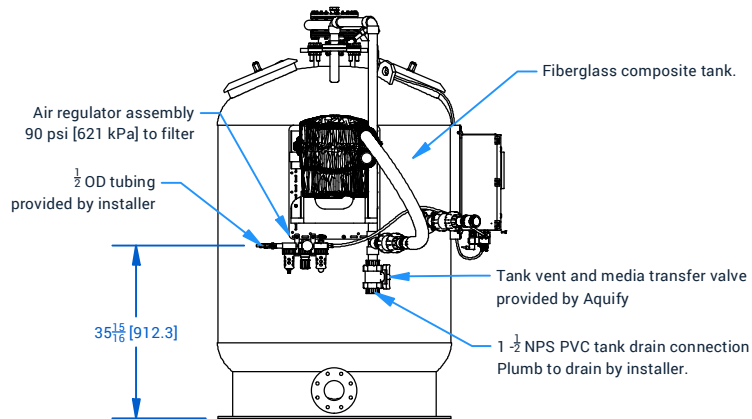
1. All flanged connections are flat faced PS-15-69 with ASME B16.5 Class 125/150 bolting pattern.
2. All pneumatic tubing supplied by pool contractor unless specified otherwise.
3. Contractor to provide and install 4 NPS [DN100] butterfly valve to tank drain connection.
4. Supply 120 VAC single-phase power (direct wire) to filter controller with 15 AMP circuit protection.
5. Provide 125 PSI [862 kPa] regulated air supply to filter.
6. Housekeeping pad may be required to meet site-specific drain plumbing requirements.
7. All PVC fittings are Schedule 80 ASTM D2467. All PVC pipe is Schedule 80 ASTM D1785 unless specified otherwise.
8. All hardware per ANSI B1.1.
9. Dimensions listed are in inches [mm].
10. Missing dimensions can be obtained from CAD data.

FILTER DATA:

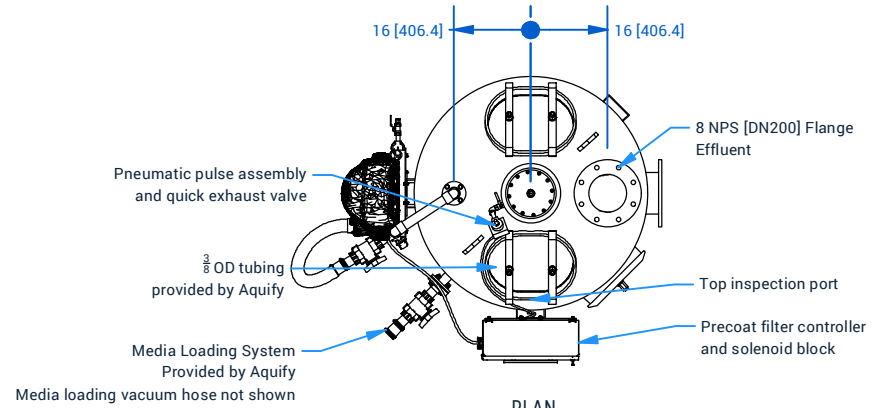
NSF/ANSI-50 Listed filter
Design Pressure: 50 PSI [345 kPa].
Filtration Rate: 0.5 - 1.5 GPM/SF
Tank Volume: 480 gal [1.82 M³]



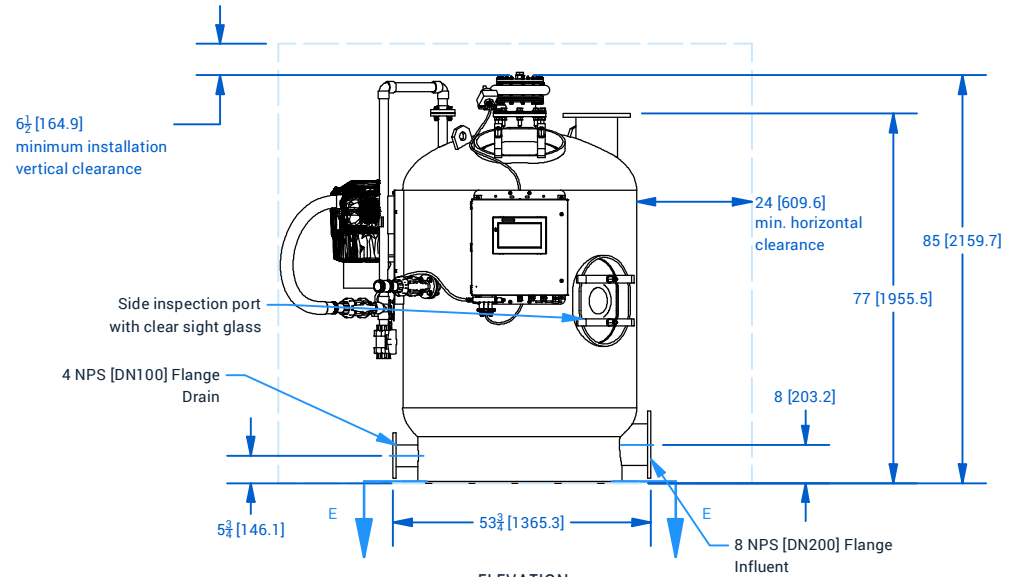
SECTION E-E
TANK MOUNTING DETAIL



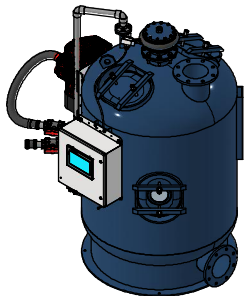
VIEW D-D
MEDIA LOADING SYSTEM ELEVATION



PLAN



ELEVATION



Specification	PMF-48-800-FRP	PMF-48-900-FRP
Filtration Area	800 FT² [74.3 M²]	900 FT² [83.6 M²]
Filter Rate	400 GPM - 1200 GPM [90.8 M³/hr - 272.5 M³/hr]	450 GPM - 1350 GPM [102.2 M³/hr - 306.6 M³/hr]
Perlite Media Required	64 LB [29 Kg]	72 LB [32.7 Kg]
Unit Weight (Dry)	1020 LB [462.7 Kg]	1100 LB [499 Kg]
Operating Weight	5024 LB [2278.8 Kg]	5104 LB [2315.1 Kg]
Concrete Bearing Pressure	10.9 PSI [75.2 kPa]	11.1 PSI [76.5 kPa]



TITLE Product Specification Sheet Aquify Precoat Media Filter Specification Sheet, PMF-48-800-FRP, PMF-48-900-FRP		
PROJECT	LOCATION/POOL	REV
SCALE	1 / 40	B
SHEET 1 OF 1		