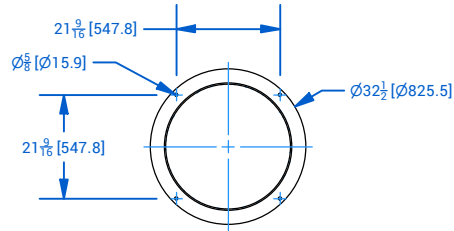


# GENERAL NOTES:

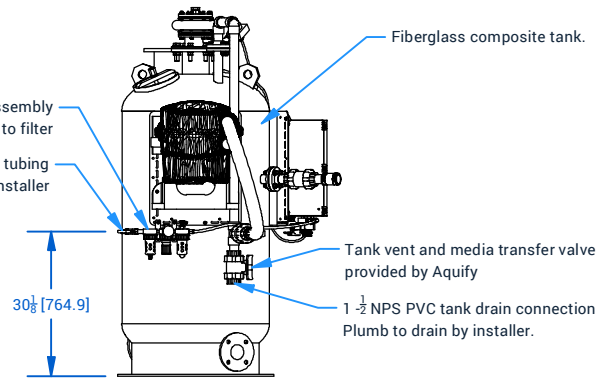
1. All flanged connections are flat faced PS-15-69 with ASME B16.5 Class 125/150 bolting pattern.
2. All pneumatic tubing supplied by pool contractor unless specified otherwise.
3. Contractor to provide and install 3 NPS [DN80] butterfly valve to tank drain connection.
4. Supply 120 VAC single-phase power (direct wire) to filter controller with 15 AMP circuit protection.
5. Provide 125 PSI [862 kPa] regulated air supply to filter.
6. Housekeeping pad may be required to meet site-specific drain plumbing requirements.
7. All PVC fittings are Schedule 80 ASTM D2467. All PVC pipe is Schedule 80 ASTM D1785 unless specified otherwise.
8. All hardware per ANSI B1.1.
9. Dimensions listed are in inches [mm].
10. Missing dimensions can be obtained from CAD data.

# FILTER DATA:

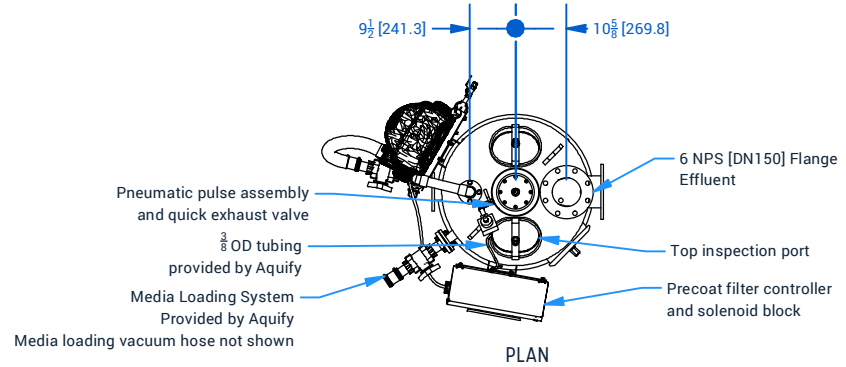
NSF/ANSI-50 Listed filter  
Design Pressure: 50 PSI [345 kPa]  
Filtration Rate: 0.5 - 1.5 GPM/SF  
Tank Volume: 150 gal [0.57 M³]



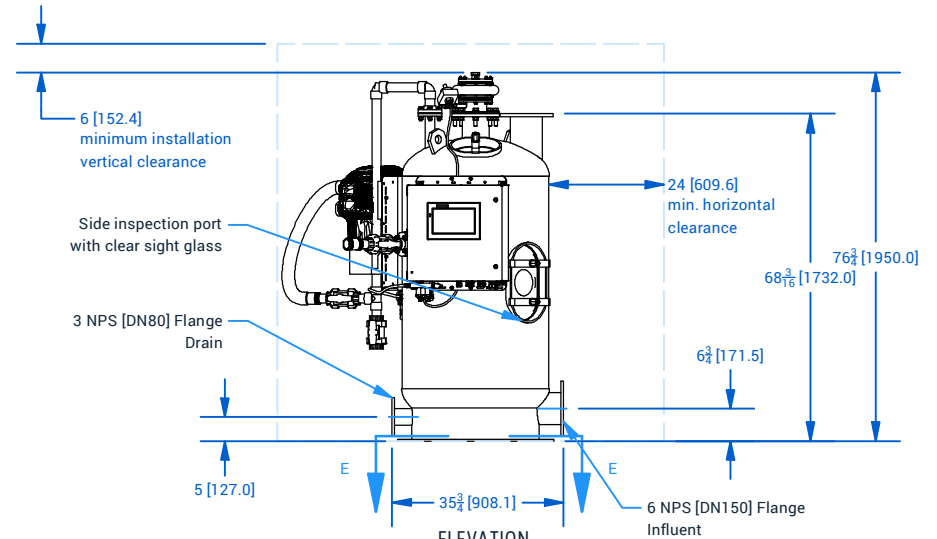
SECTION E-E  
TANK MOUNTING DETAIL



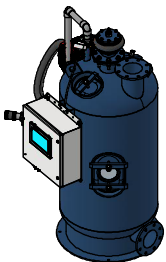
VIEW D-D  
MEDIA LOADING SYSTEM ELEVATION



PLAN



ELEVATION



Specification	PMF-30-100-FRP	PMF-30-200-FRP	PMF-30-300-FRP
Filtration Area	100 FT² [ 9.3 M²]	200 FT² [ 18.6 M²]	300 FT² [ 27.9 M²]
Filter Rate	50 GPM - 150 GPM [ 11.4 M³/hr - 34.1 M³/hr]	100 GPM - 300 GPM [ 22.7 M³/hr - 68.1 M³/hr]	150 GPM - 450 GPM [ 34.1 M³/hr - 102.2 M³/hr]
Perlite Media Required	8 LB [ 3.6 Kg]	16 LB [ 7.3 Kg]	24 LB [ 10.9 Kg]
Unit Weight (Dry)	420 LB [ 190.5 Kg]	465 LB [ 210.9 Kg]	510 LB [ 231.3 Kg]
Operating Weight	1798 LB [ 815.6 Kg]	1844 LB [ 836.4 Kg]	1884 LB [ 854.6 Kg]
Concrete Bearing Pressure	6 PSI [ 41.4 kPa]	6.2 PSI [ 42.7 kPa]	6.4 PSI [ 44.1 kPa]



TITLE Product Specification Sheet Aquify Precoat Media Filter Specification Sheet, PMF-30-100-FRP, PMF-30-200-FRP, PMF-30-300-FRP		
PROJECT	LOCATION/POOL	REV
SCALE 1 / 40	SHEET 1 OF 1	B